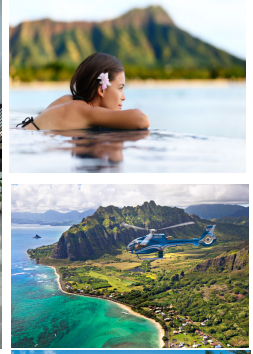


檀香山
五至六天
逍遙遊



Honolulu 5 - 6 Days	精選酒店	淨團費 (Land Only)			
		雙人房	三人房	小童 (2-11歲)	單人房
HL5B (5天) 天天出發 1. 溫哥華 → 檀香山 2. 珍珠港半天市內觀光 3. 波利尼西亞文化村 (包晚餐) 4. 小環島半天遊 5. 檀香山 → 溫哥華	Ohia Waikiki Studio Suites	819	769	289	1279
	Ramada Plaza by Wyndham	959	869	289	1559
	Oasis Hotel Waikiki (包早餐)	1129	1009	289	1909
	Sheraton Princess Kaiulani	1159	1089	289	1959
	Waikiki Resort (包早餐)	1189	1119	359	2099
	Hilton Hawaiian Village	1459	1379	289	2559
	Prince Waikiki (Ocean View)	1559	1479	289	2759
	Sheraton Waikiki (City view)	1829	1659	289	3299
HL6E (6天) 天天出發 1. 溫哥華 → 檀香山 2. 珍珠港半天市內觀光 3. 小環島半天遊 4. 自由活動 5. 自由活動 6. 檀香山 → 溫哥華	Ohia Waikiki Studio Suites	699	619	89	1299
	Ramada Plaza by Wyndham	879	729	89	1639
	Oasis Hotel Waikiki (包早餐)	1099	909	89	2069
	Sheraton Princess Kaiulani	1119	989	89	2099
	Waikiki Resort (包早餐)	1159	1029	159	2199
	Hilton Hawaiian Village	1499	1329	89	2879
	Prince Waikiki (Ocean View)	1619	1449	89	3119
	Sheraton Waikiki (City view)	1959	1669	89	3799
HL6S (6天) 天天出發 1. 溫哥華 → 檀香山 2. 珍珠港半天市內觀光 3. 小環島半天遊 4. 波利尼西亞文化村 (包晚餐) 5. 自由活動 6. 檀香山 → 溫哥華	Ohia Waikiki Studio Suites	939	849	289	1519
	Ramada Plaza by Wyndham	1109	969	289	1869
	Oasis Hotel Waikiki (包早餐)	1329	1139	289	2299
	Sheraton Princess Kaiulani	1359	1219	289	2339
	Waikiki Resort (包早餐)	1399	1259	359	2439
	Hilton Hawaiian Village	1739	1559	289	3119
	Prince Waikiki (Ocean View)	1859	1659	289	3359
	Sheraton Waikiki (City view)	2199	1899	289	4039

❖ 備註 1: 行程先後次序有可能因實際情況而調動, 請以確認書所列之行程安排為準。若「自由活動」有指定之日期, 請報名時注明。

珍珠港 - 市內觀光 (Pearl Harbour & City Tour)

驅車前往珍珠港參觀第二次大戰日本偷襲原址，細看當年力抗日軍偷襲的壯烈場面。遠眺亞利桑那號戰艦紀念館及伊奧拉尼皇宮。稍後途經中國城、州政府大樓、夏威夷第一任國王銅像及夏威夷皇宮。(全程約4小時)

小環島半天遊 (Mini Circle Island Tour)

遊覽舉世聞名的威基基海灘，鑽石頭火山口，遊畢後途經卡拉高拉高級住宅，天然海泉噴口，著名的白沙灘及恐龍灣海灘公園。及後前往神秘的努阿努帕里大風口古戰場(若當日阿努帕里大風口關閉，則改往魔幻島代替)，享受夏威夷的熱帶風情。(全程約3小時)

波利尼西亞文化中心(Polynesian Center) ** 包自助晚餐 **

"Polynesia"為希臘語“多島”的意思，是南太平洋的主要部分；由北端的夏威夷、南端的新西蘭和東邊的復活島組成一個大三角地域。到達後，遊客在導遊的帶領下參觀多個不同文化特色的部落，瞭解波利尼西亞原居民的風土人情。晚間享受豐盛的美食自助餐，並欣賞由過百位演員參加的大型傳統歌舞表演及驚險的火把表演。(全程約9小時)

* Ohia Waikiki Studio Suites

Apartment-style suites with views. Located 2 blocks to Waikiki Beach and right in front of the International Market Place - an open-air shopping center. Majority of rooms feature kitchens, and all rooms come standard with a mini-fridge, coffeemaker, and private lanai.

* Ramada Plaza by Wyndham Waikiki

This 198-room hotel is within 1 km of Hawaii Convention Center and 3 km of Royal Hawaiian Center. Hotel features an outdoor pool, a 24-hour gym, a restaurant and 24-hour business center. Rooms equipped with a microwave, tea and coffee making facilities and a refrigerator. All rooms are air conditioned and feature an in-room safe.

* Oasis Hotel Waikiki

Located across from upscale shopping on Luxury Row, hotel is 2 minutes' walk to the Royal Hawaiian Center and 5 minutes' walk to Waikiki Beach. All 96 individually decorated rooms boast comforts such as furnished balconies and laptop-friendly workspaces, as well as amenities like daily continental breakfast, WiFi internet throughout the hotel, daily Newspaper, in-room Coffee, in-room Safe and a lot more.

* Sheraton Princess Kaiulani

All 1000 guestrooms in two 1-story wings and a 29-story tower. Located across from Waikiki Beach, it's within a block of the Royal Hawaiian Shopping Center and features an open-air buffet restaurant and poolside bar next to the salt water pool.

* Waikiki Resort

This 275 room hotel is ideally located in the heart of Waikiki, just a 3 minutes walk away from Waikiki Beach and the luxury shopping on Kalakaua Avenue – home to numerous shops, restaurants, and bars. Guests are only an eight-minute stroll away from the International Market Place

* Hilton Hawaii Village

Unique Village-style resort among the five towers set in 22 acres of oceanfront paradise with over 20 resort restaurants and bars. Guests choose from six swimming pools, including a children's pool and the 10000-square-foot Super Pool.

* Prince Waikiki

Waterfront property which located on Ala Wai harbor, this upscale high-rise resort is an 11-minute walk from Ala Moana Beach Park and Ala Moana Center. Also walking distance to Kaka'ako neighborhood restaurants, street art and shops. Thoughtfully designed rooms and suites all face the harbor and ocean offering breathtaking views.

* Sheraton Waikiki Hotel

Hotel features 1,636 renovated rooms, most with a private lanai facing the ocean. Located 0.2 km from Waikiki Beach Walk and 0.4 km from International Market Place. Hotel offers Khakara Spa, delicious restaurants and the largest ballroom in Waikiki. 2 outdoor swimming pools, a waterslide, and a 24-hour fitness center.

❖ 備註 2: 若當地酒店增設「設施附加費」- Resort Fee, 則以報名時通知為準, 客人請入住時於酒店前檯繳付。

❖ 備註 3: 辦理酒店入住手續時, 請出示護照及有效之信用咭以作登記之用。

【聖誕及新年旺季附加費】:

❖ (2024年12月21日 至 2025年1月15日) 期間出發或旅遊, 將有【旺季】附加費, 每位約\$150-300, 敬請查詢。

費用包括 (Inclusions):

1. 每晚酒店住宿
2. 機場至酒店來回接送 (只限7:00am-9:45pm)
3. 行程內之觀光遊覽節目

費用不包括 (Exclusions):

1. 來回機票及稅項
2. 行程內之膳食及私人性質費用, 如: 電話費等
3. 簽證費用及個人旅遊綜合保險
4. 航空公司之托運行李費用 (國際及內陸航班)
5. 導遊及司機小費 USD 6.00 (每人/每天);
以下行程除外:
 - 波利尼西亞文化中心一日遊 USD 10.00
 - 茂夷島一日遊 USD 12.00
 - 火山島(大島)一日遊 USD 12.00

注意事項 (Remarks):

1. 辦理酒店入住手續時, 請出示護照及有效之信用咭以作登記之用。
2. 小童、第3、4位與兩成人同房, 以兩張床為標準; 不設加床。
3. 來回航班時間, 請安排於 7am – 9:45pm 到達 / 離開。額外時間接送團友需另付每位 / 每程CAD 30 (以2位起計算)。
4. 每房團友只安排一次機場接送服務。如同房團友需分程接送, 每程需額外費用, 敬請查詢。
5. 酒店早餐: 供應時間以當地酒店公佈為準。如因當天早上參團而未能享用酒店提供之早餐, 敬請自備。
6. 行程次序及酒店安排有可能因應實際情況而變動, 以當地接待社安排為準。如有更改, 恕不另行通知。
7. 訂位一經確認, 本公司恕不接受任何個人理由更改或取消訂位。為保障旅客利益, 請報名時向旅行社購買個人旅遊保險。
8. 團費以加幣計算。如有調整, 以報名時為準。

特約旅行社:

*有關報名詳情及旅遊細則, 請參閱明假期2024年彩色章程背頁

For Terms and Conditions please refer to Charming Holidays 2024 Color Brochure

We reserve the right to amend the itinerary at anytime without prior notice.